



STILLE imagiQ2

Upgrades & accessories



Surgical perfection. For life.

imagiQ2 standard configuration



Standard configuration

The STILLE imagiQ2 comes with the following configuration:

- 225 Kg / 496 lb patient weight capacity
- Black ergonomic transport handles
- Battery life of up to 5 days in normal use
- 4 swiveling wheels
- Pan handle
- Hand control + Emergency hand control
- Hand control extension cable
- Low attenuation mattress
- Fixed side rails

New

Part number	Description
530-1700	imagiQ2 Basic EU
530-1701	imagiQ2 Basic UK
530-1702	imagiQ2 Basic JP
530-1703	imagiQ2 Basic USA

imagiQ2 upgrades to fit your needs



Mobility enhancement pack

When the table is used for frequent intra-clinic transportation, use the mobility enhancement pack for improved mobility. All wheels are designed to swivel and an additional fifth wheel is included to provide optimal mobility.

Configuration:

- 4 swiveling wheels and our proven linear 5th wheel.

Upgrade Ref: 535-1711

imagiQ2 upgrades to fit your needs



Load upgrade pack

Maximize the capabilities of the imagiQ2 with increased patient weight capacity up to 661 lb / 300 kg. This premium upgrade has silver ergonomical transport handles.

Please note that this option must be specified on original order before delivery. It can't be retrofitted to an already delivered unit.

Upgrade Ref: 535-1710

imagiQ2 upgrades to fit your needs



Performance pack

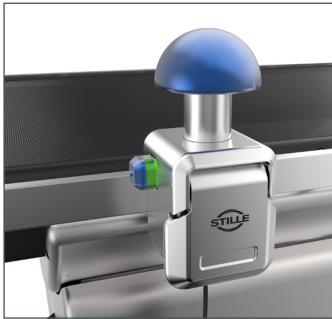
For maximum uptime, choose the performance pack.
It includes a high-performance long-term battery pack
with up to 1 week of durability.

This upgrade can be chosen at any time.

Now included in standard configuration

Upgrade Ref: 535-1712

imagiQ2 accessory highlights



Extra pan handle

Extra pan handle allows panning the table from different sides
Article code: 535-1760
(USA/LATAM: 535-1761)



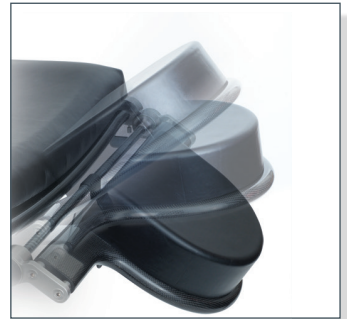
Detachable short side rail

28.5 cm rail system enabling accessory mounting and 360° imaging capabilities.
Article code: 535-1725
(USA/LATAM: 535-1724: 11.22")



Translucent fistula arm board

Provides an unobstructed image and is connected directly to the carbon fiber top for Vascular procedures.
Article code: 535-1730



Adjustable procedure headrest

Fully translucent headrest, ensures easy intubation and superior carotid visualization. It fits both ends of the table and does not require side rails.
Article code: 535-1742



imagiQ2 radiation shields

Tailored and easy to fit protection against scattered radiation with lead rubber (0.5 Pb) material.
For detailed information please see our brochure for Radiation Shields.



Detachable long side rail

Detachable long side rail systems enabling (full*) table length side rails, accessory mounting and optional 360° imaging capabilities.
Article code: 535-1721 (80.5cm)
Article code: 535-1729 (70.0cm)
(USA/LATAM: 535-1720: 31.69", USA/ LATAM: 535-1723: 27.5")
*only applies for 535-1721 and 535-1720



Anesthesia frame

Provides a sterile barrier separating the surgical field from the patient's head.
Article code: 514-100311
(USA/LATAM: 514-100311-US)



Catheter tray (Vascular)

Provides an extended work space, which is attached directly to the table. Available in three lengths.
Article codes:
500 mm: 535-1752
1,000 mm: 535-1750
1,500 mm: 535-1751



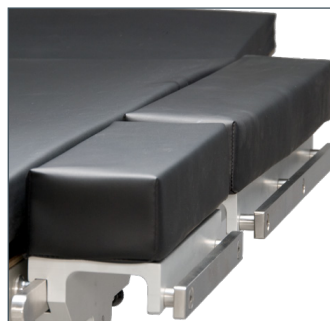
Universal adjustable arm board

Nontranslucent board provides ideal support for the patient's arm during IV.
Article code: 514-50-3SR025
(USA/LATAM: 514-50-3SR027)



imagiQ2 foot control

Compact multipedal footswitch for discrete placement beneath the table with soft touch buttons and a light operating force.
Article code: 535-1762



Widening sections ERCP

Side rail mounted side extensions, length 455 mm, with mattresses, for procedures involving lateral positioning of the patient.
Article code: 514-100422 (pair)
Other dimensions available upon request.
Require: Side rails 535-1721 (not available in the U.S.)



Side gates ERCP

Side rail mounted gates to ensure the patient's safety and comfort during ERCP procedures.
Article code: 514-100530 (pair)
Require: Side rails 535-1721 (USA/LATAM: 514-100530-US; require: Side rails 535-1720)

The imagiQ2 offers a wide range of accessories for vascular, ERCP, pain management and electrophysiology; and it can be upgraded with features to adapt to surgical needs.



Body/ leg strap

Strap to fix the patient, to be fixed to the side rails by Velcro.
Article code: 514-100465



IV-pole

Infusion pole with clamp for side rail fixation.
Article code: 514-100401
(USA/LATAM: 514-100401-US)



Head cushion

Cushion to stabilize the patient's head during procedures.
Article code: 514-100334



Leg holders

Leg holders Goepel type with clamps
Article code: 514-50-3SR032 (pair)
(USA/LATAM: 514-50-3SR033/ pair)

imagiQ2 accessory catalogue

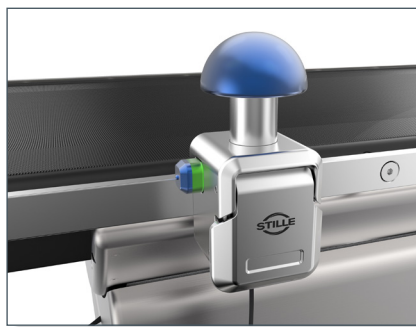
Accessory	Part number	Standard	Option	Market availability
Pan handle DIN	535-1760	x		All excluding U.S./ LATAM
Pan handle U.S.	535-1761	x		U.S./ LATAM only
Short detachable side rail DIN* (28.5 cm)	535-1725		x	All excluding U.S./ LATAM
Long detachable side rail DIN (70 cm)	535-1729		x	All excluding U.S./ LATAM
Long detachable side rail DIN ** (80.5 cm)	535-1721		x	All excluding U.S./ LATAM
Short detachable side rail U.S.* (11.22")	535-1724		x	U.S./ LATAM only
Long detachable side rail U.S. (27.5")	535-1723		x	U.S./ LATAM only
Long detachable side rail U.S.** (31.69")	535-1720		x	U.S./ LATAM only
Fistula arm board	535-1730		x	All
Head rest, adjustable	535-1742		x	All
Head rest, fixed	535-1741		x	All
X-ray protective kit grey	535-1770		x	All
X-ray protective kit blue	535-1771		x	All
X-ray protective loop grey	535-1772		x	All
X-ray protective loop blue	535-1773		x	All
X-ray protective panel grey	535-1774		x	All
X-ray protective panel blue	535-1775		x	All
Anesthesia frame	514-100311		x	All excluding U.S./ LATAM
Anesthesia frame	514-100311-US		x	U.S./ LATAM only
Catheter tray 1000 mm	535-1750		x	All
Catheter tray 1500 mm	535-1751		x	All
Catheter tray 500 mm	535-1752		x	All
Adjustable arm board DIN	514-50-3SR025		x	All excluding U.S./ LATAM
Adjustable arm board	514-50-3SR027		x	U.S./ LATAM only
Foot Control	535-1762		x	All
Widening sections 455 mm w.mattress/pair	514-100422		x	All excluding U.S./ LATAM
Side gates, foldable/ pair	514-100530		x	All excluding U.S./ LATAM
Side gates, foldable/ pair	514-100530-US		x	U.S./ LATAM only
Lateral support with clamp	514-50-3SR028		x	All excluding U.S./ LATAM
Lateral support with clamp	514-50-3SR030		x	U.S./ LATAM only
Body/leg strap	514-100465		x	All
IV-pole with clamp	514-100401		x	All excluding U.S./ LATAM
IV-pole with clamp	514-100401-US		x	U.S./ LATAM only
Head cushion	514-100334		x	All
Leg holders with clamps/ pair	514-50-3SR032		x	All excluding U.S./LATAM
Leg holders with clamps/ pair	514-50-3SR033		x	U.S./ LATAM only
Basic arm board	512-5000		x	U.S./ LATAM only
Anesthesia screen	512-5030		x	U.S./ LATAM only
IV-pole without clamp	512-5010		x	U.S./ LATAM only
IV pole clamp	512-5013		x	U.S./ LATAM only
Footboard carbon fiber with pad	512-5040		x	U.S./ LATAM only
Deluxe maximum restraint	O-RSX2		x	U.S./ LATAM only
Adjustable tray with clamp	514-50-3SR036		x	All
DORO® Side Rail Adaptor Amsco	514-3011-10		x	All

* The detachable short side rails (28.5cm/ 11.22") are not to be used with a retractor system, catheter trays 1000mm and 1500mm

** The detachable long side rails (80.5 cm/ 31.69") are not compatible with the adjustable head rest (535-1742)

imagiQ2 upgrades

Upgrade features	Reference	Description
Mobility enhancement pack	535-1711	Extra 5th guiding wheel for intra-clinic transportation.
Load upgrade pack	535-1710	Increased patient weight capacity up to 661 lb / 300 kg.



STILLE imagiQ2 | Accessories

STILLE – Surgical perfection

STILLE is one of the oldest medical device companies in the world. At STILLE, we develop, produce and sell high-quality surgical instruments and surgical imaging tables to physicians worldwide, and has done so for 170 years.

STILLE's offering consists of a strong brand and products renowned for their superior quality. We manage our business in two distinct business areas – Surgical Instruments and Surgical imaging tables.

Surgical instruments

In our Surgical Instruments business area, we have a complete offering of handcrafted, forged instrumentation for all fields of open surgery, with a special emphasis on cardiovascular surgery, and reconstructive and aesthetic plastic surgery.

Our instruments feature delicate design, industry-leading durability and a unique feel, which has made STILLE a well-known and highly respected supplier by surgeons throughout the world.

Surgical imaging tables

In our Surgical imaging tables business area, we offer specialty tables for minimally invasive procedures, with pricing, safety and features optimized for both in- and outpatient settings. The STILLE imagiQ2 surgical imaging table has the highest translucency in the world, and is optimized for advanced mobile Hybrid OR settings as well as peripheral and interventional procedures.

The STILLE Medstone line of imaging tables offer reliability and optimal performance at an affordable cost with the highest standards of Swedish technology.

Learn more at www.stille.se



Surgical perfection. For life.

STILLE AB

Ekbacken 11
SE-644 30
Torshälla, Sweden
Phone: +46 8 588 580 00
Fax: +46 8 588 580 05
info@stille.se

www.stille.se

STILLE Surgical Inc.

915 Parkview Blvd
Lombard, IL 60148
United States
Phone: 1.800.6651614

Distributed by: